

THE DCC - CAPITAL COMPANY PROFILE

PLANNING, ARCHITECTURE, ENGINEERING & CONSTRUCTION & MANAGEMENT SUPPORT SERVICES TO
ABATTOIR, COLD STORAGE, LIVESTOCK, FOOD PROCESSING AND BULK STORAGE INDUSTRIES



CONTACTS

Head Office

Level 1, 172 St Georges Terrace, Perth, Western Australia 6000

URL: www.capitalhouse.com.au

Email: mailbox@capitalhouse.com.au

Ph: +61 8 9324 3211 Fax: +61 8 9324 3255

Mobile: John +61 (0)41 798 2715 or Graeme +61 (0)417 173 556

CONTENTS

INTRODUCTION

SCOPE OF SERVICES / EXPERTISE

PROJECT TEAM

MR GRAEME JOHNSON

MR JOHN KNUCKEY

DR JOHN MILTON

MR PETER BACKSHALL

MR BRIAN NELSON

MR BRETT REID

MR OLIVER NELSON

MR DOMENIC MALATESTA



INTRODUCTION



DCC Capital will prepare a proposal to address the specific requirements of any particular project in response to further enquiry and commitment from the developer/client.

DCC-Capital is a design and project/construction management organisation experienced in the provision of planning, design, engineering, equipment procurement, project management, construction management and operational management support services for Feedlots, Abattoirs, Cold Storage and Food Processing Industries, Bulk Storage and supporting infrastructure.

DCC-Capital's capability and quality of service has been proven by the successful execution of numerous major projects throughout Australia and Internationally. DCC-Capital has many years experience in the highly specialised disciplines required for the design of successful and enduring project and has consistently provided its clients with unique facilities that meet their targeted budget and operational needs.

DCC Capital's representatives work with the Client to determine the specific requirements of each project and then deliver facilities that match those requirements. DCC-Capital will ensure that all factors are considered when determining final design configurations and will offer its recommendations as and when appropriate. All designs provided by DCC-Capital ensure that the facility can be expanded without compromising the structural, architectural and operational integrity of the initial design.

DCC Capital is not aligned with any equipment suppliers and its designs draw on an appropriate selection of equipment from suppliers in Australia, Europe, Asia and USA. Designs that are independent of equipment suppliers ensure a transparent tendering system that delivers the most cost effective solution for each project.

Environmental impact of projects is an increasingly dominant factor when establishing a greenfield development or expansion projects. DCC-Capital staff will familiarise themselves with all necessary local and national regulatory bodies and ensure such standards are applied during the project.

Key staff members have considerable experience working in international environments and clearly understand the importance of conduct appropriate to the culture of the host country.

SCOPE OF SERVICES / EXPERTISE

DCC-Capital provides planning, design, engineering, equipment procurement, project management, construction management and operational management support services for a broad spectrum of project types and sizes. Its focus is to ensure that both the immediate requirements and future expansion requirements are included in planning and design.

Planning - Project Feasibilities Studies

DCC-Capital undertakes feasibility studies and investigations, either as part of a total project service or as an independent assignment. Specialist fields include;

- Total conceptual design for livestock handling and quarantine facilities, feedlots and abattoir developments.
- Systematic evaluation of process equipment and recommendations to the meat industry on productivity improvements, product marketing consultancy.
- Resource development studies as in the case of food processing facilities, meat abattoirs, livestock feedlot design, sustainable development strategies etc.
- Technology transfer via human resource management and placement of expatriate technical personnel within the meat and livestock industry.
- Capital expenditure planning and evaluation studies, including review of capacity and design requirements, site location assessments, building construction and process machinery cost estimates etc;

Design

DCC Capital's projects and designs evolve through constant review and refinement as new and more effective methods and technology are developed globally.

In addition to in-house resources, additional expertise can be called upon through collaboration with our network of international colleagues to ensure the most up to date proven technology can be applied to a wide range of disciplines as appropriate to the host country. This is particularly applicable in fields of energy management systems and materials handling techniques constantly evolving for Abattoir and Cold Storage industries. The design services include:

- Complete architectural and engineering solutions
- Process flow, productivity, hygiene, quality assurance, efficiency.
- A combination of manpower resources and automation appropriate to the circumstances of a project.
- Fully documented for tender
- Alternatively, documented for turnkey delivery

- Incorporation of building materials, product materials handling innovations and techniques, energy management systems, labour practices and aftermarket trends facilitate efficient operating practices and reduced maintenance / operating costs at each new facility.

Project Management, Procurement and Construction

Effective management systems, procedures and technology are implemented for:

- Management of project approval processes.
- Development and control of the project brief and budget as they evolve during the initial phases.
- Development, monitoring and control of project program to optimise design and construction duration and monitor critical path to ensure timely delivery.
- Risk management
- Contract Documentation quality and electronic distribution
- Materials and equipment procurement and delivery
- Contract Management and Construction costs
- Quality Assurance
- Project implementation, commissioning, training, operating manuals, etc

Management Support Services

DCC-Capital's clients often request operational assistance during the initial period of project operation. DCC-Capital can provide the following services to assist its clients on an interim or ongoing basis:

- operational planning and general management
- education, training and technology transfer
- feed and nutrition management
- overall livestock management
- business planning marketing services
- veterinary services and breeding programs
- waste processing and management
- facilities maintenance and technical assistance
- stock sourcing and supply
- feedlot management and agistment

The Group offers a comprehensive service through its network of highly experienced and dynamic personnel.

PROJECT EXPERIENCE

DCC-Capital has undertaken Design and/or Design and Construction of many projects in Australia and Internationally as demonstrated by the following examples:

Australia

- International Shipping Line Frozen Freight Distribution Cold Storage Warehouse - 5,000 pallet Freezer Store and Administration Building.
- 32,000 Carton capacity cold store facility and meat de boning room upgrade for a national Australian Supermarket chain.
- A value added facility for the pre-cooked/pre-packed and processed foods division of a major poultry processing company.
- A 4,000 birds per hour processing plant for high value poultry processing, IQF and packaging facilities.
- 80,000 m³ Grain storage facility for CBH, Australia's largest grain handling organisation.
- Design + construction of a 20,000 square metre distribution centre + cold storage facility.
- Renovation and upgrading of a 60,000 head feedlot facility.
- New beef and sheep carcass chillers.
- New elevated sheep lairage facilities.
- Development of a major multi-function freight and logistics centre for heavy industry.
- Numerous major architectural and infrastructure structures using FRP Composite materials.

Egypt

- Upgrade of municipal abattoir in Cairo.
- Beef and Sheep Abattoir and feedlot facility proposal for Port Sokhna.
- Upgrade and expansion of a beef abattoir at Port Sokhna.

Peoples Republic of China

- Nominal 32,000 cubic meter controlled atmosphere cold storage facility for long term storage of fruit including grading and packaging plant, Dalian Liaoning Province.
- Fully Integrated seafood processing, freezing and packaging facility complete with staff amenities and housing complex. Total floor area of combined buildings 22,500 square meters, Dalian, Liaoning Province.

Indonesia

- Fully integrated export standard beef cattle abattoirs (2) in West and Central Java.
- Distribution cold storage facility for dairy products producer, Bandung, West Java.
- Cold Storage Meat Importer – Design proposal for cold storage warehouse, Jakarta.
- Integrated design for a beef abattoir and associated retail outlets facilities.

- Pre-feasibility study for a 20,000 head beef cattle feedlot and abattoir development.

Thailand

- Fruit and Vegetable grading packing and IQF facility complete with cannery facility in Chang Mai, Northern Thailand.
- Poultry processing plant design for major international poultry group. Complete design of feed mill, hatcheries, grow out sheds, processing and packaging plant.

Malaysia

- Design development and project management for the fabrication of a range of Modular Mini Abattoirs (containerised) for small-scale production.
- UHT Long Life (tetra-pak) milk processing plant for Sabah, East Malaysia.
- Various design proposals for beef and poultry processing facilities (in progress).
- 6,000 head beef cattle feedlot design and construct submission to the Selangor Economic Development Corporation
- Pre-feasibility study for a 12,000 head beef cattle feedlot and abattoir development.

Argentina

- 50 head per hour fully integrated beef slaughter facility complete with carcass chillers, deboning and packaging rooms, small goods processing and cold storage aging chiller for boxed cryo-vac chilled meat.

Vietnam

- Design and construction management of a multi species (Export Abattoir) – Haiphong..
- Design for feed cattle abattoir and feedlot facility - Danang, Vietnam.

Mexico

- Conventional and Modular abattoir designs, to USDA standard for beef and sheep abattoirs providing chilled meat for export to the North American market, Guadalajara State.

CURRENT PROJECTS INCLUDE;**Australia**

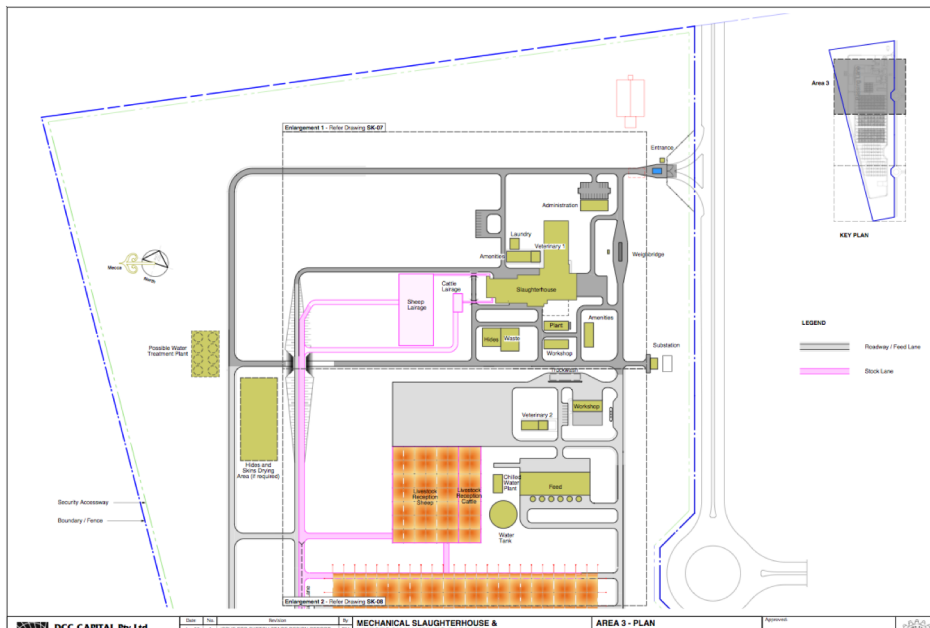
- New plate and blast freezer facility.
- Major boning room extension

Indonesia

- Pre-feasibility study for a vertically integrated beef cattle breeding, feedlot, abattoir and meat distribution facility.



MR GRAEME JOHNSON
Director of DCC Capital Pty Ltd
Principal Agribusiness Consultant



PROJECT TEAM – MR GRAEME JOHNSON

Industry Background

Graeme has an architectural background and has been involved in the food industry, abattoir and cold storage and livestock projects for over 30 years. His involvement with both design and construction has been in a hands on capacity with the majority of the projects listed under “Project Experience”.

His experience and expertise in the design and implementation of abattoirs, cold storage, food processing facilities and support infrastructure on an international scale is extensive. His experience includes vertically integrated projects that deal with both the project itself and also raw materials supply, processing operations, marketing, distribution and sales.

As Principal Project Consultant Graeme maintains a hands on role during all phases of each project from concept to completion of construction and commissioning. Whilst other project team members also have high profile roles in project implementation, Graeme provides a constant point of contact for the client and remains accountable for the end result.



During the course of his work Graeme has travelled extensively and worked for extended periods in China, the Middle East, Vietnam, Thailand and Indonesia. As such he is well aware of the importance of cultural and religious issues that are unique to each country and is highly skilled in addressing these issues in both design, construction and day to day life.

PROJECT TEAM – MR JOHN KNUCKEY



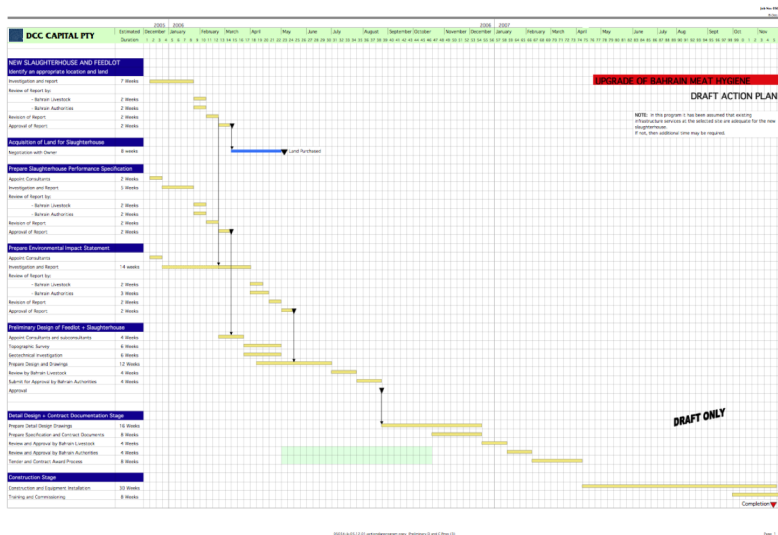
MR JOHN KNUCKEY
Director of DCC Capital Pty Ltd
Engineering and Contracts Manager

Academic Qualifications

Graduated in Civil Engineering, West Australian Institute of Technology (1975).
 Professional Certificate in Arbitration, University of Adelaide (2001).

Professional Affiliations

Member of the Institution of Engineers, Australia.
 Member of the Institute of Arbitrators and Mediators Australia.



General Background

John is a civil engineer experienced in design management, project management and construction management of civil engineering and building projects. His experience has been gained during 15 years employment in the resources industry and during the past 25 years as a director of engineering and construction company Capital House Australasia.

His project experience includes planning, design and construction in connection with abattoir, cold storage, livestock, agriculture and associated infrastructure facilities as well as public, commercial and industrial buildings, railways, mining and power station projects,.

He has undertaken numerous projects from concept to completion and is highly skilled in the following processes:

- feasibility studies, project definition and budget development
- client consultation and communication skills
- hazard identification and risk management
- cost planning
- design, contract management & program strategies for fast track
- engaging and managing subconsultant teams
- equipment procurement
- tender & contract document preparation
- design and construct contracting
- construction management
- commissioning, handover and defects liability
- dispute resolution, arbitration and mediation

Industry Background

John has been directly involved in the planning, design and construction of numerous abattoir, cold storage and feedlot projects in Australia, SE Asia and the Middle-East.

PROJECT TEAM – MR JOHN MILTON



DR JOHN MILTON
Nutrition and Productivity Consultant

Academic Qualifications

BAgrSci (Hons), University of Queensland, 1974
 Doctor of Philosophy (PhD), University of Queensland, 1984
 Specialist field – Ruminant Nutrition

Distinguished Awards

July 1996 made an Officer of The Most Noble Order of the Crown of Thailand by His Majesty, The King of Thailand.

Affiliations

Australian Institute of Agricultural Science and Technology.
 Australian Society of Animal Production.
 Foundation Member Nutrition Society of Australia.
 Australian Association of Agricultural Consultants, WA Inc.
 Foundation Member Australian Fodder Industry Association.

Languages

English native language.
 Thai conversational.

Awards from the Department of Agriculture, Western Australia

1997 Inaugural Meat Program Innovation Award – Highly Commended.
 1998 Meat Program Innovation Award – Overall Winner.
 1999 Meat Program Innovation Award –Overall Winner.

Industry Background

John Milton has been employed by the University of Western Australia (UWA) since 1991 and is currently Senior Research Fellow, Faculty of Natural and Agricultural Sciences (FNAS), School of Animal Biology and Principal of Independent Laboratory Services (ILS).

He was appointed as Senior Research Fellow at UWA to develop and expand animal science teaching and research in the faculty and, through frequent association with farmers, help raise the profile of the faculty in the farming community of Western Australia.

Under John Milton's direction, ILS provides a feed analysis and consultancy service. It analyses over 1,400 feedstuffs annually (about 30% export oat hay samples) and formulates rations for at least 40 clients lot feeding either beef cattle or prime lambs. Consultancy clients also include dairy farmers, Merino and prime lamb feedstock producers, goat producers, feed millers, live export companies, Resource Consulting Services on sheep production in Qld and Landcorp – the largest agricultural enterprise in NZ.

Between 1985 and 1991 he was Residential adviser and Assistant Project Director for the Thai-Australian Prince of Sanga University Project. In recognition of his role in the project he was made an officer of The Most Noble Order of the Crown of Thailand.

Prior to 1985 John tutored for 7 years at the University of Queensland Department of Agriculture, Veterinary School and later became a Research Associate in the Faculty of Agriculture. During 1982/83 he was self employed as a grain farmer and established livestock feed analysis and consultancy service in Queensland.

Publications

Author and co-author of:

- 70 scientific papers in International and National journals and conference proceedings
- 4 chapters in Western Australian Department of Agriculture Bulletin 4473 "The Good Food Guide for Sheep".
- 3 final reports to funding bodies.
- 38 seminar proceedings and newsletter articles.

PROJECT TEAM – MR PETER BACKSHALL



MR PETER BACKSHALL
Marketing Consultant

Academic Qualifications

Bachelor of Commerce

Master of Management (strategic management)

Industry Background

Peter has extensive experience in export working for both government agencies and private business. For the past six years he has been a director of MarkeTrade, specialising in research, analysis and strategic planning for the export industry with particular focus on agribusiness. Specialist areas include quality management systems, supply chain optimisation, branding and promotion and market development. A “whole-of-business” approach ensures that the strategy adopted is sustainable in all circumstances. A summary of his experience with three major employers follows:

MarkeTrade Research Planning Strategy

- Research consultancy specialising in the seafood and agribusiness sectors.
- Over ten years exporting experience.
- Six years consulting to private business and government agencies.
- ‘Whole-of-business’ approach to research, planning and strategy.
- Quality management systems supply chain optimisation, branding and promotion, and market development.
- Researching markets, preparing plans and strategies.
- Analysis of proposed and established ventures.

Geraldton Fishermen’s Co-operative

- Marketing Manager.
- Largest seafood processor in the southern hemisphere.
- Annual sales in excess of \$100M.
- Exporting 2,500+ metric tonnes p.a. of live and frozen lobster.

Mitsui & Co.

- Marketing Manager negotiating short and long-term sales contracts; managing trade finance, insurance, and logistics.
- Turnover of \$120M p.a. in minerals, chemicals and energy-based products.
- Joint venture management committee for world-scale solar salt operation at Shark Bay with sales of \$60M p.a.

PROJECT TEAM - MR BRIAN NELSON



MR BRIAN NELSON
Director of DCC Capital Pty Ltd
Engineering Manager

Academic Qualifications

Master of Engineering Science, University of Western Australia.
 Graduate of the Council of Engineering Institution, Britain.
 Diploma in Structural Engineering, Perth Technical College.
 Numerous research and technical papers

Professional Affiliations

Chartered Member of the Institution of Engineers, Australia
 Member of the Institution of Structural Engineers, Britain
 Member of the Institution of Civil Engineers, Britain
 Registered Temporary Professional Engineer, Malaysia

Industry Awards

Finalist 1990 BHP Steel Design Awards.
 Australian Institute of Steel Construction Awards.
 1997: Engineering Design - Matrade Building, Kuala Lumpur, Malaysia.
 1999: Engineering Design - Legenda Casino Hotel – Subic Bay, The Philippines.
 1999: Architectural Design - Relocatable School Building – Perth, Australia.
 2004: Architectural Design – Kings Park Bridge – Perth, Australia

Industry Background

Brian commenced private practice as a consulting engineer in 1980.

In 1990, he became a founding director of engineering and construction company Capital House Australasia which has since expanded to complete major and technically complex projects for corporate clients, contractors and government agencies in Australia, Malaysia, Singapore, Indonesia, Vietnam, Philippines, Taiwan, Hong Kong, the Middle East and Pakistan.

Fields of Expertise

As a structural engineer his range of expertise is extensive encompassing buildings, civil engineering structures and a wide range of conventional and exotic material types.

BUILDING STRUCTURES

Prestressed Concrete and Steel Floor Systems
 Cable Supported Structures
 Stressed Skin Folded Plates
 Systemised Pre-engineered Buildings
 Rammed Earth and Load Bearing Masonry
 Curtain Walling & Glazed Cladding Systems
 Buildings to Cyclonic Design
 Low Cost Housing Systems

CIVIL ENGINEERING STRUCTURES

Bridges
 Free-standing Towers
 Bulk Material Storage Hoppers and Bins
 Water Retaining Structures
 Cranes
 Railways
 Foundation Structures
 Marine structures
 Pavements

MATERIALS

Fibre Reinforced Polymer Composite
 Cold Formed Light Gauge Steel
 Cable nets
 Spheroidal Nodular Iron
 Fabric Structures
 Extruded and Cast Aluminium
 Engineered Glazing and Curtain Walling
 Mortarless Interlocking Concrete Blockwork
 Composite Timber
 Prestressed clay
 Fibre Reinforced Cement & Fibre Reinforced Plastics

PROJECT TEAM - MR BRETT REID

**BRETT REID****Director**

Structural, civil and geotechnical engineering

Academic Qualifications

Bachelor of Engineering (Hons) Curtin University (1999)

Professional Affiliations

Member of the Institution of Engineers, Australia.



Brett joined Capital House in 2005 to pursue a career in structural engineering. His initial work was task based providing technical and contract administration support to more senior staff, however, he quickly developed sufficient skills and experience to be able to take a leading role providing civil, structural and geotechnical expertise for design of substantial residential, industrial and institutional projects. He was promoted to Director in June 2016.

FIELDS OF EXPERTISE

As a structural engineer, Brett is experienced in design using all conventional structural materials for both new developments and additions and/or alterations/upgrading works. He has substantial experience on the assessment of existing building structures for compliance with Standards Australia loading codes and the effective remediation/upgrading of such structures when required.

Through training and engagement with major civil engineering projects Brett has developed skills in geotechnical engineering, stormwater management, roadworks, civil engineering structures and pavement design.

EXAMPLES OF RECENT PROJECT EXPERIENCE

He has had a significant involvement in the following recent projects fulfilling both design and construction contract administration roles:

- New elevated lairage facilities and pavements for V&V Walsh Bunbury
- Abattoir extensions and new sheep and beef chillers for V&V Walsh Bunbury
- Structural remediation of existing beef chillers for V&V Walsh Bunbury
- Numerous projects requiring assessment of existing building structures, design and certification of remedial works.
- Superintendent's Representative – Gap Ridge Karratha Industrial Development (\$15M)
- Butler Senior High School - Design Phase (\$50M)
- Centurion Transport Distribution Centre (\$30M)
- Karrakatta Railway Bridge, Underpass and Pedestrian Bridge (\$10M)
- Bullsbrook development civil works and stormwater management plan (\$4M)
- CSBP Gatehouse Security Building (\$2.0)
- Market City Warehouse development (\$2.0)

PROJECT TEAM - MR OLIVER NELSON



OLIVER NELSON
Director
 Principal Engineer

Academic Qualifications

Bachelor of Engineering (Hons) UWA

Professional Affiliations

Member of the Institution of Engineers, Australia.

Oliver's combination of practical construction and contracting knowledge, combined with extensive engineering design experience, make him uniquely positioned to provide safe, efficient and cost-effective engineering solutions for the Client.

Oliver has 15 years experience in structural engineering and project management roles within contractor, consulting and EPCM organisations.

Oliver has extensive structural engineering design experience, including for infrastructure, heavy industrial and marine works, and has a detailed working knowledge of relevant Australian and International Standards. Structural engineering design has often been undertaken within integrated, multi-disciplined project requirements, and hence he has relevant experience with respect to related engineering design components.

He has spent significant periods as a Site engineer for fabrication and construction phases, including in remote and regional Australia, to develop a comprehensive practical knowledge of fabrication capabilities and constructability. This knowledge is used to develop safe engineering solutions for clients while minimising site labour requirements, cost impacts and client disruption.

Oliver has also been involved with structural deconstruction, structural remediation and strengthening/assessment works on existing structures. Degradation assessment works include familiarity with corrosion rates, testing methods and corrosion numerical projections of existing steel and concrete structures.

Of further relevance is his project management experience across all project phases, and has been responsible for all engineering disciplines (electrical, mechanical, structural, instrumentation and controls, piping) on large projects. His project management duties include detailed knowledge and direct experience of the following processes:

- feasibility and definition studies
- environmental approvals
- resourcing and cost estimating
- constructability assessments including plant and equipment requirements
- programme (schedule) development for all project phases
- tender documentation preparation including development of scope and specifications
- fabrication and construction technical support
- transportation and logistics technical support
- controls, cashflow, forecasting
- risk assessment and contingency planning
- quality and compliance management
- system commissioning and handover

PROJECT TEAM - MR DOMENIC MALATESTA



DOMENIC MALATESTA
Director
 Documentation, IT and Quality Control Manager

Academic Qualifications

Certificate in Mechanical Engineering
 Bachelor of Business (EC&IS) ECU

Domenic is responsible for production and quality of all of the company’s documentation output. He developed and implemented the company’s documentation standards and protocols which are recognised as pre-eminent by industry together with document control systems for document exchange.

Domenic undertook post graduate studies to obtain a Bachelor of Business Degree majoring in information technology and is responsible for the company’s IT systems.

FIELDS OF EXPERTISE

As Documentation Manager Domenic is familiar with all conventional civil and structural drafting software including 3D and cross platform applications.

In addition, his information technology expertise is used in the maintenance and continuous improvement of the company’s IT systems.

EXAMPLES OF RECENT PROJECT EXPERIENCE

Domenic has been directly involved in or had oversight of the drafting for all major projects undertaken by the company during the past 25 years. Many of those projects can be viewed at www.capitalhouse.com.au.

Projects documented by Domenic include numerous abattoir and livestock facilities for Australian and international clients.

